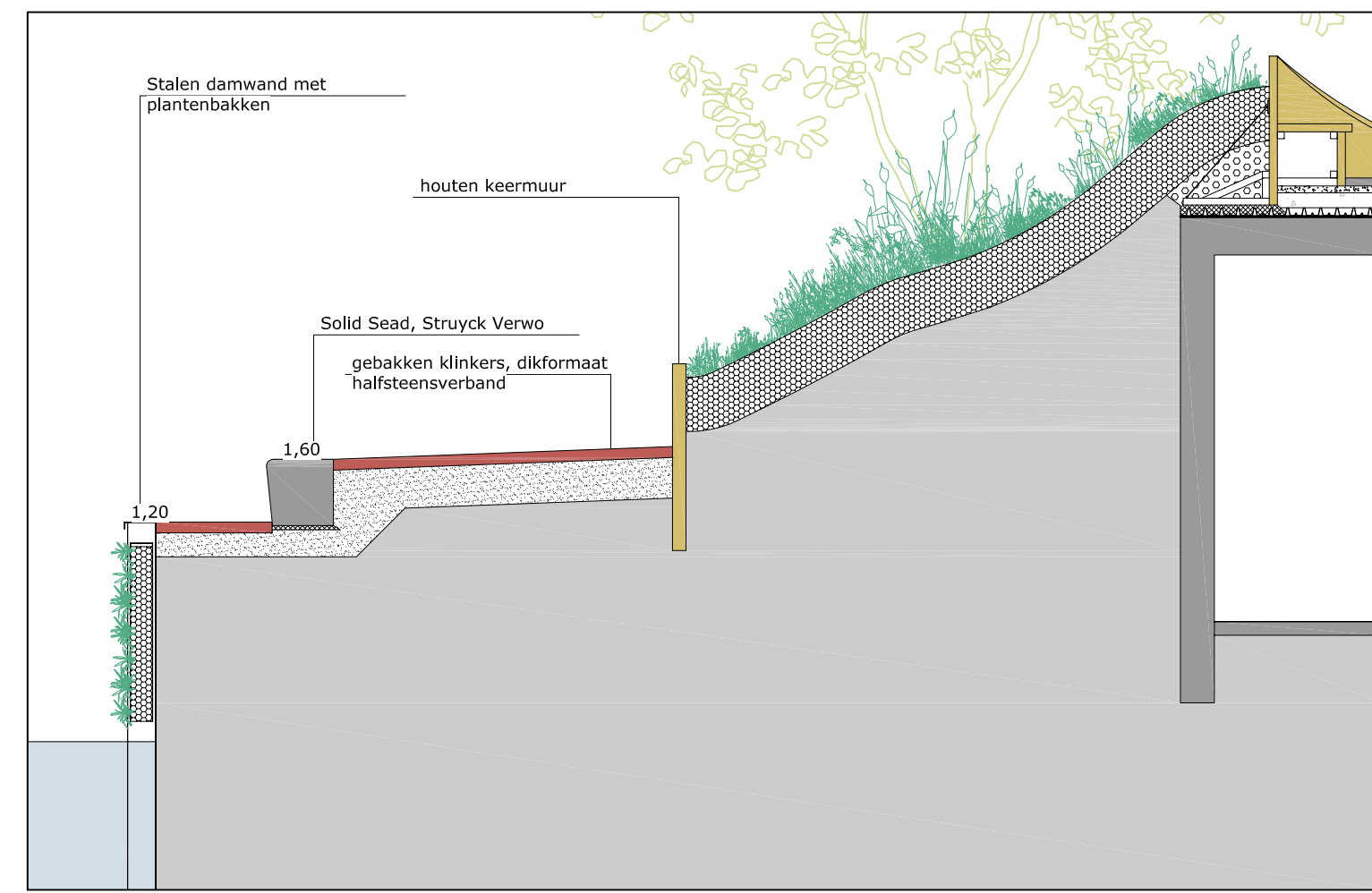
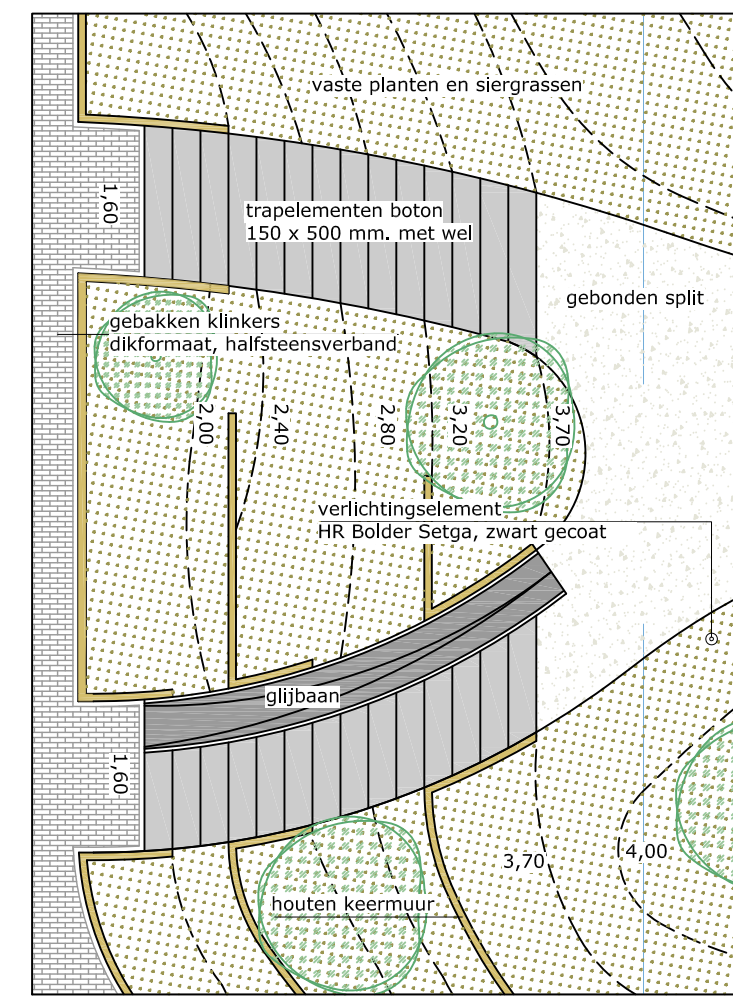


1. doorsnede F/G  
1:200



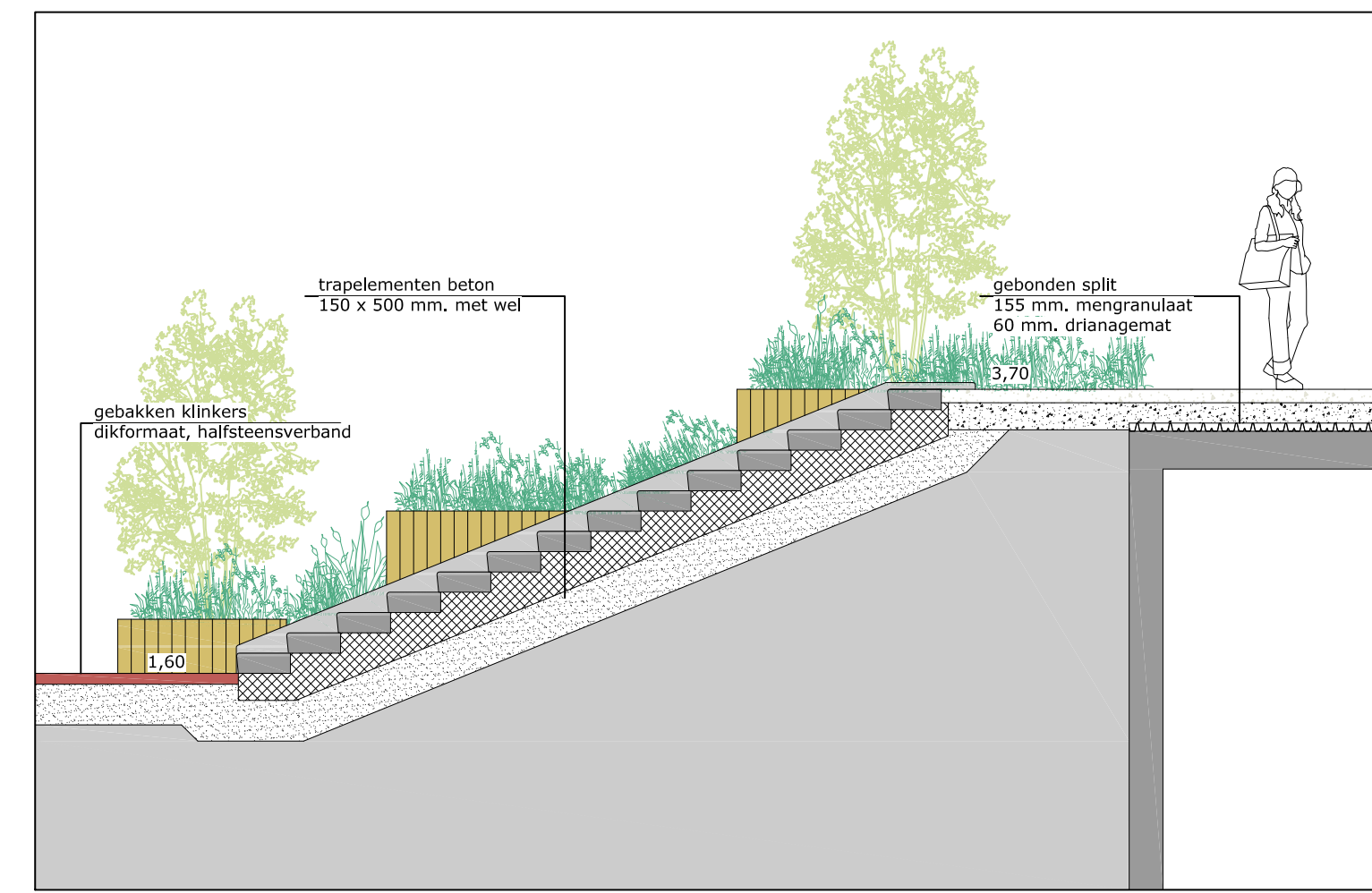
A. doorsnede kade  
1:50



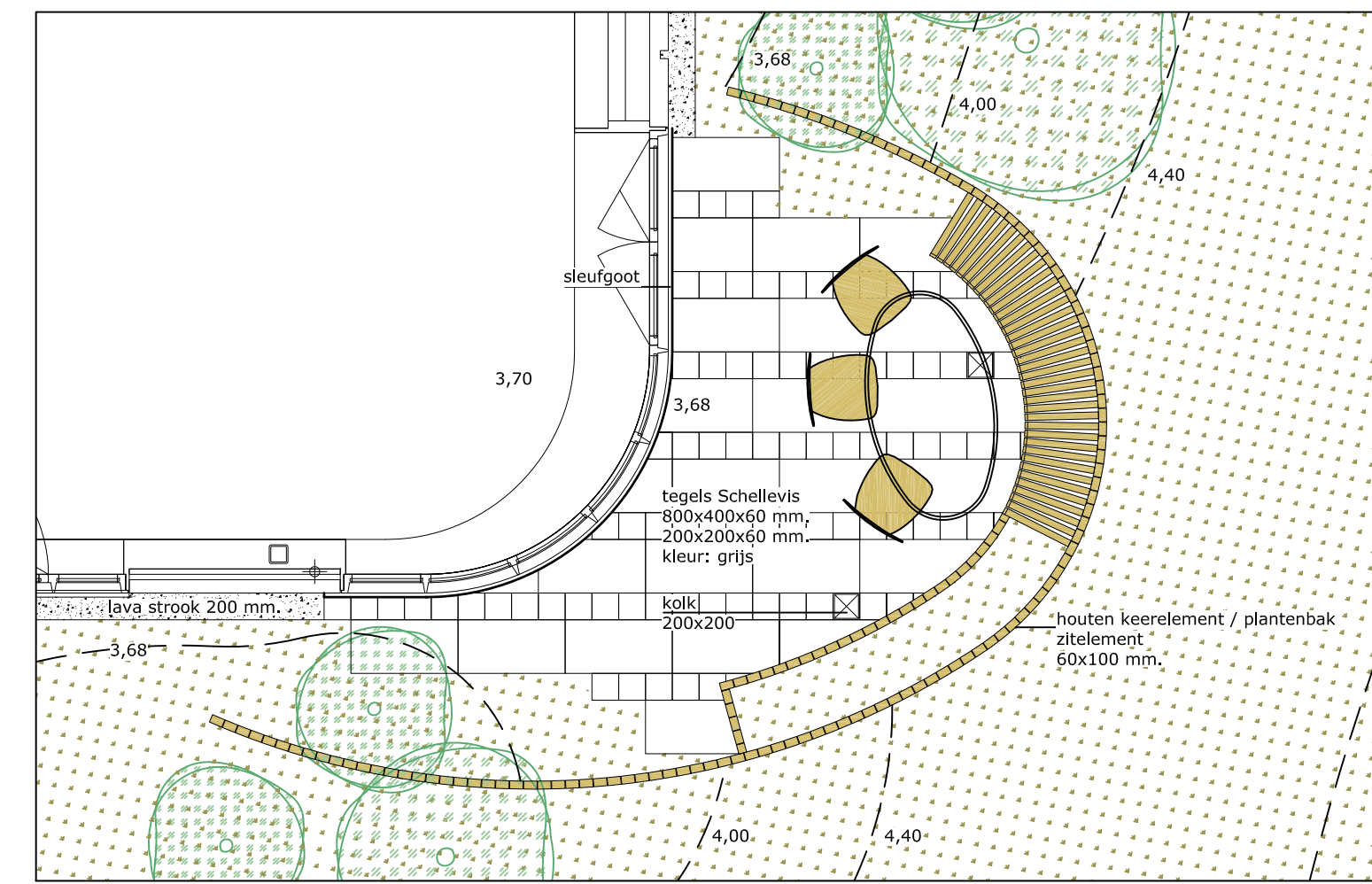
7. detail glijbaan  
1:100



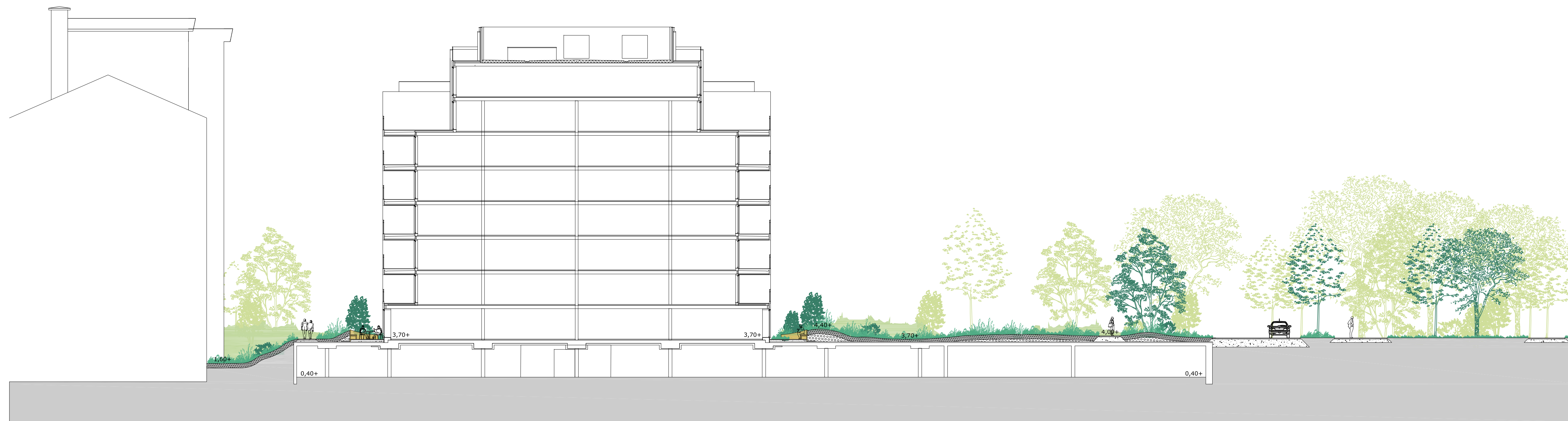
aanzicht trap / glijbaan  
1:50



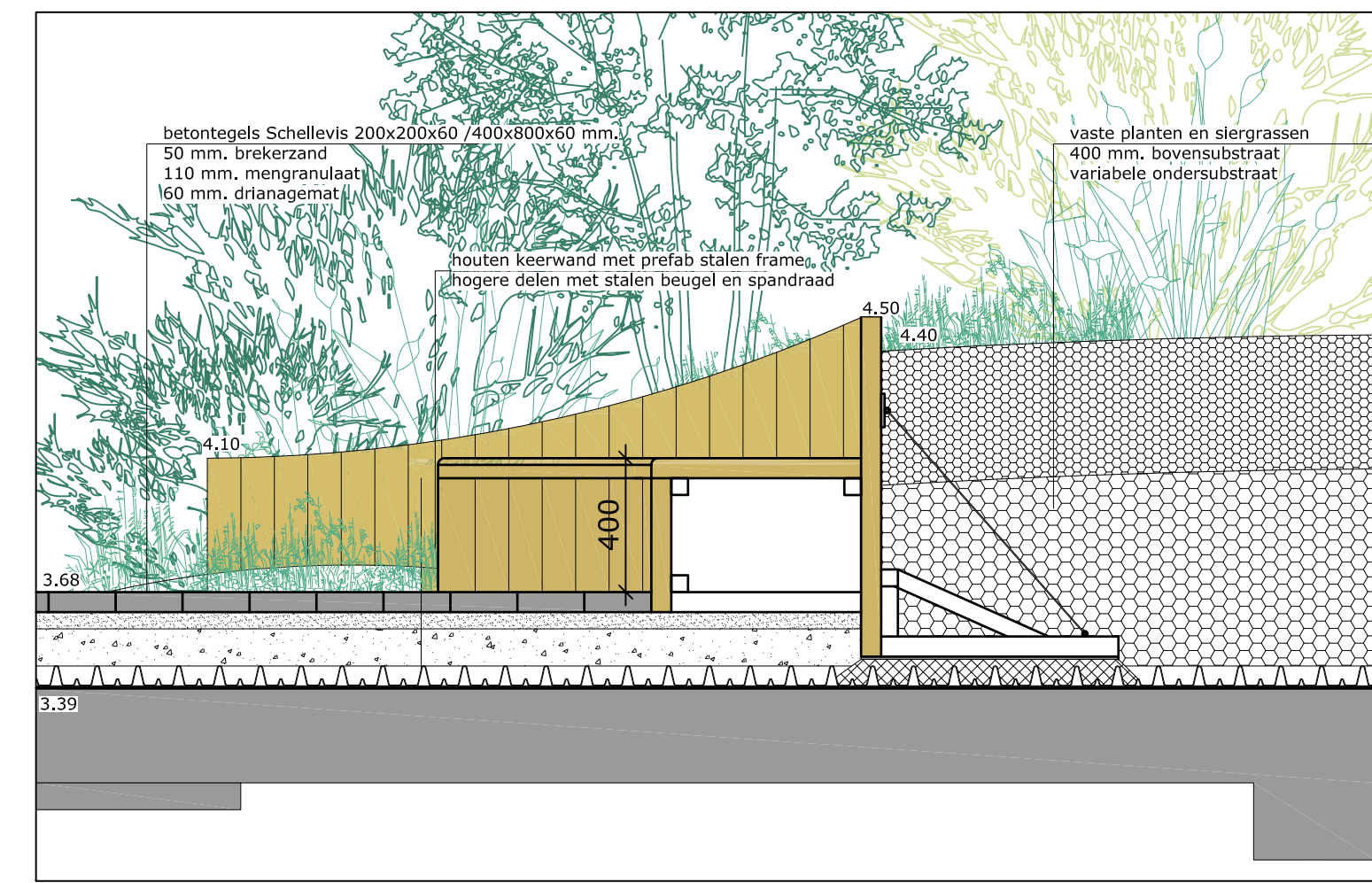
doorsnede trap / glijbaan  
1:50



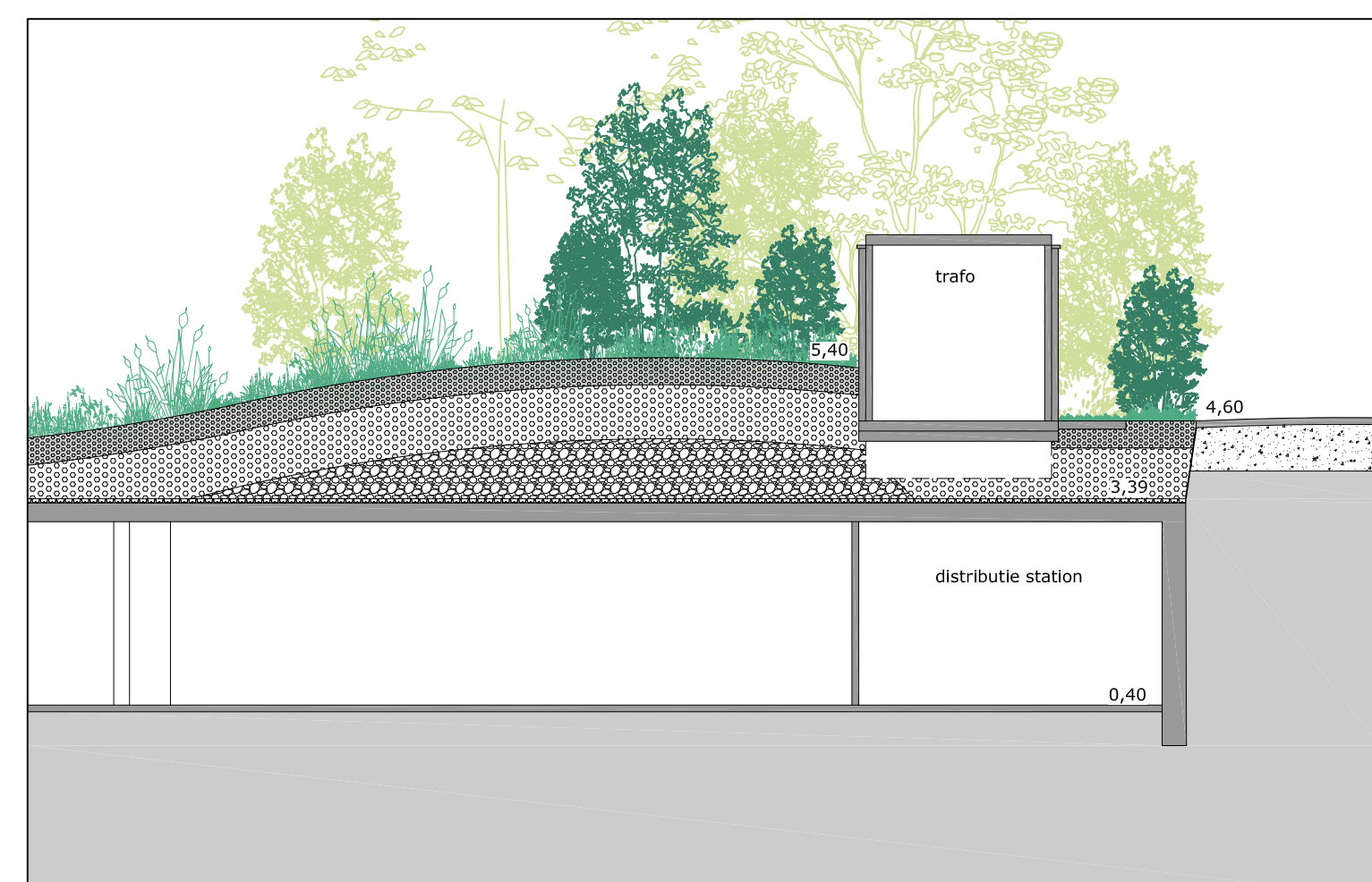
detail privé terras  
1:50



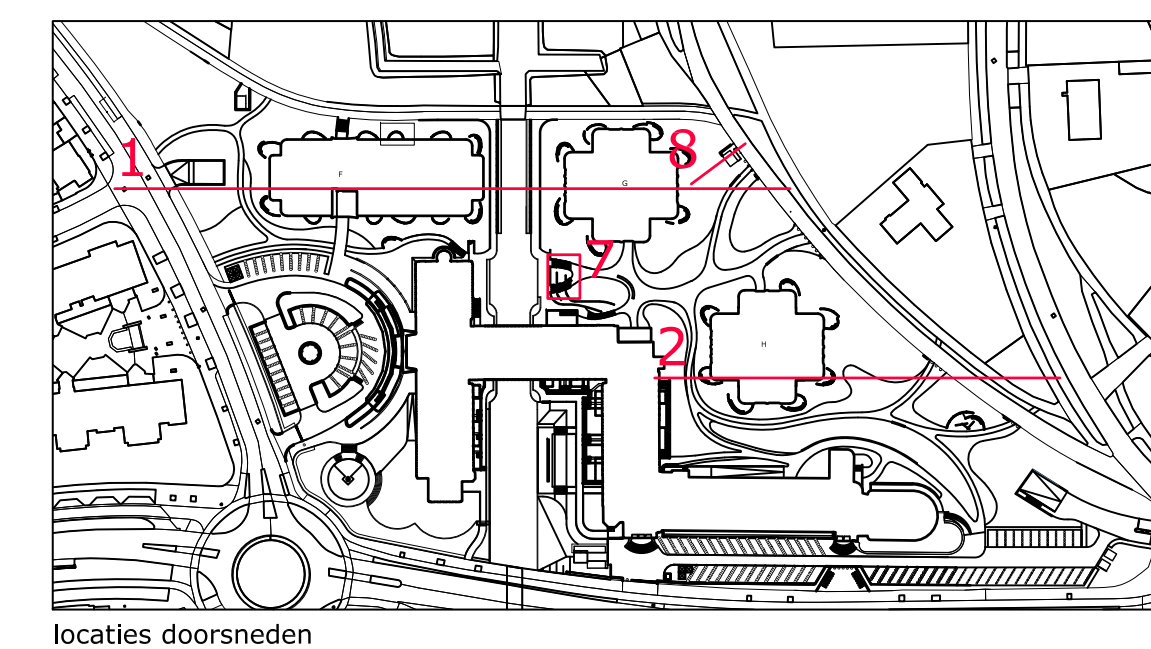
2. doorsnede H  
1:200



B. doorsnede privé terras  
1:20



8. doorsnede trafa  
1:100

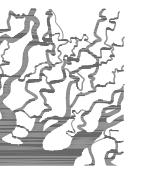


locaties doorsneden

mallebaan 77h  
3581 cg utrecht  
t +31 (0)30 26 11 834  
bureau@deltavormgroep.nl  
www.deltavormgroep.nl

project  
**Plesmanduin**  
opdrachtgever  
**Impact**  
onderwerp  
**Doorsneden oost-west**  
tekeningnummer  
718-301  
schaal  
-  
getekend  
JJ

deltavormgroep



datum  
08-11-2021  
gewijzigd  
formaat  
750x1050